

Borough of Carlisle Stormwater Funding Project Update

August 29, 2018

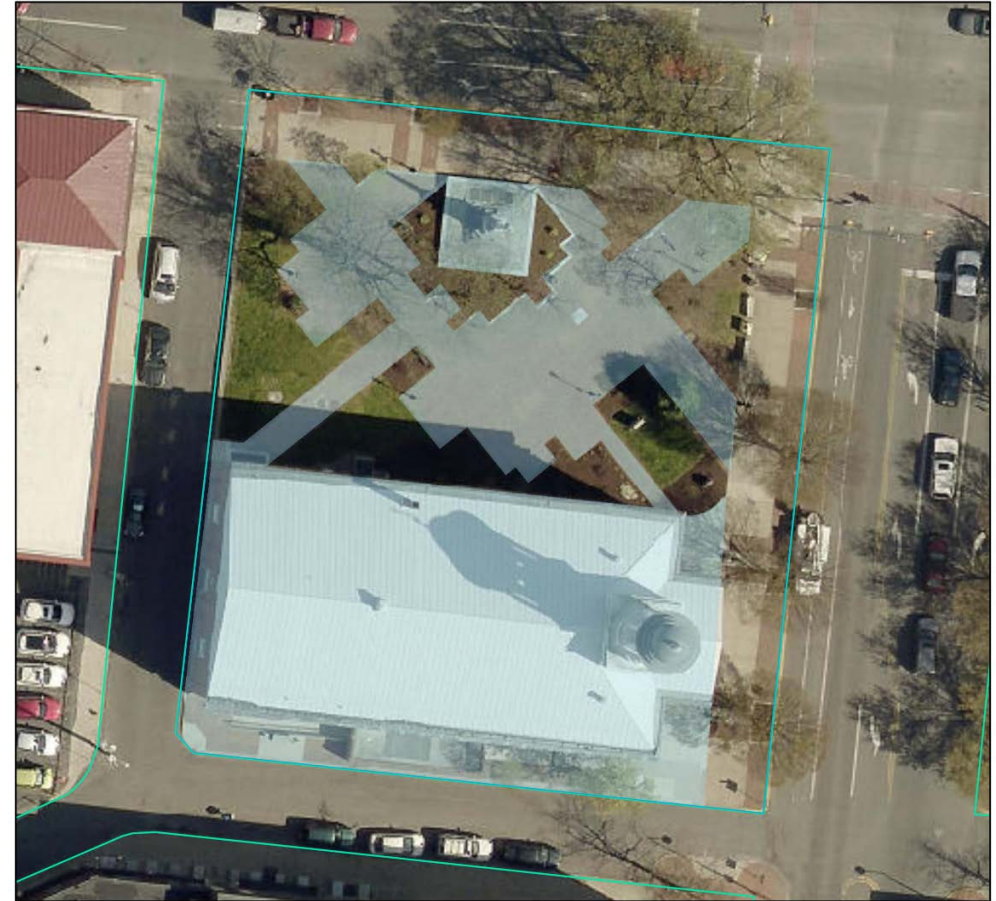
Stormwater Needs

- New regulatory needs
- Needed program enhancements
 - Increased level of service – O&M, sweeping
 - Inspection and oversight of private systems
- Needed equipment
- Master Plan
 - Planned capital projects will be responsive to this
- Stormwater Park project and other capital
- About \$1.5M needed each year

**FLOODING
WATER QUALITY
REGULATIONS**

Background

- Stormwater funding feasibility study
- Taxes vs fees
- Public outreach last year



Feedback

- Public meeting
- Business community
- Dickinson College
- Carlisle Area School District
- Cumberland County
- Nonprofit organizations

Problems acknowledged

Simple

Fair

How much?

Fix things!

Need time to plan

Can we partner?

Money already tight!

Details of fee?

End date?

Differential rates?

Credits for BMPs?

Not a surprise

Would LeTort benefit?

Is plan well thought out?

Maintenance needs

Curb capacity

Modify development requirements?

Water quality concerns

Encourage GI?

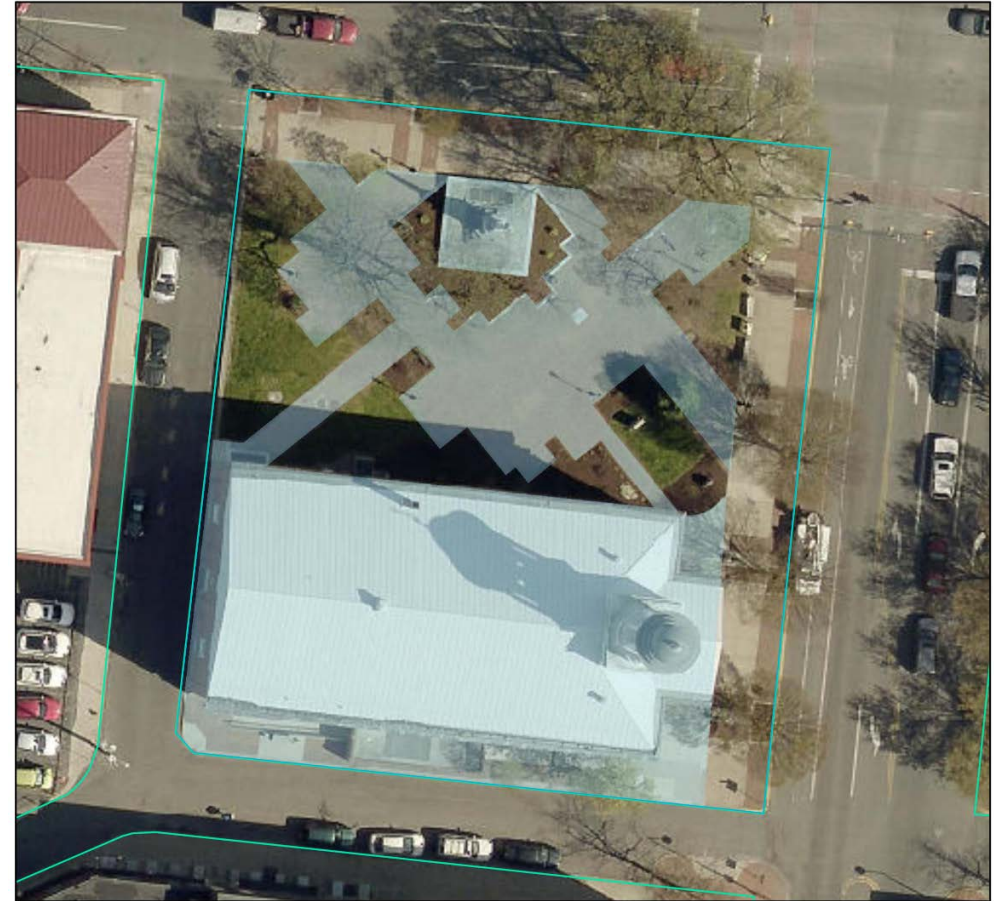
What projects?

How would funds be protected?

Could rates increase?

Progress

- Council direction to proceed in late 2017
- Measured residential and non-residential properties within the Borough
- Drafted rate structure and credit program



Draft Rates & Billing

- Single Family Residential
 - Three tiers
 - Middle tier would be charged \$21 per quarter, low \$10.50, high \$31.50
- Non-Single Family Residential
 - Based on measured impervious area
 - Would be charged \$21 per quarter per 2,410 square feet or part thereof
- Incorporated credit program
- Fees will be added to water bills beginning in January, if Council votes to proceed.

Next Steps

- Collaborate with Manager and staff
- Workshop with Council – September 2018
- Council decision – October 2018

- Implementation January 2019